



Wireless RF Test Enclosures

JRE 2830 RF Shielded Test Enclosure

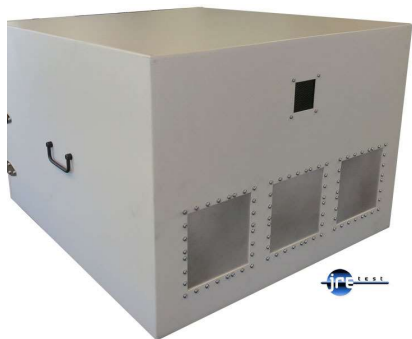
Large benchtop enclosure with 3 I/O Plates allows plenty of interface

- 18.5 x 26.5 x 28.5 inches inside 470 x 670 x 725 mm
- Quad hinges keeps door sealed RF tight
- Rugged welded aluminum construction
- Wide selection of I/O options with our universal I/O plates, easily interchangeable too!
- Easy low cost UPS shipping - Worldwide! No pallets required – Saves \$1,000's
- Light weight, only 50 lbs! Compare to similar products that weigh over 100 lbs
- Excellent RF Isolation at a low cost

Ideal for testing multiple devices in one enclosure or just large devices, The JRE2830 is perfectly suited for your tests. Triple I/O Plates allow

tremendous interface capability, while our exclusive 'honey-

comb' vent allows ventilation while still maintaining superb RF isolation.



Plenty of I/O capability with 3 plates

Featuring rugged welded aluminum construction, you can be assured of its tight RF shielding effectiveness. Long life door gasket material along with double edge engagement not only provides solid RF shielding, but smooth trouble free operation over its lifespan. Extra wide opening for easy placement of internal devices.

Our wide selection of I/O connectors allow almost any device to be interfaced inside the enclosure, and internal electromagnetic absorbing material reduces RF reflections and hot-spots.

FEATURES & BENEFITS

- Double contact door shields ensures repeatable measurements
- 3/4" thick RF absorbing foam deadens standing waves
- Heavy duty triple stainless steel friction hinges and struts
- Rugged welded aluminum construction for long life
- Wide variety of connector options for every use
- 80mm vent option, AC or DC fan optional

CONNECTORS

Triple Universal I/O plates (7" x 7" 180 x 180mm) with incredible connector options. Easily changed in the field for multiple uses. JRE Test "C" size I/O plate

ISOLATION

-100dB @ 1GHz, -95dB @ 3GHz, -85dB @ 6GHz

DIMENSIONS

Outside: 20" H x 28" W x 30" D 510 x 710 x 760 mm
Inside: 18.5" H x 26.5" W x 28.5" D 470 x 670 x 725 mm



JRE 2830 I/O Interfaces

Configuring your JRE RF Test Chamber is simple, fast and easy. Choose from ready-to-go, in stock I/O plates with the most common filtered interfaces and connectors and your test chamber can be shipped in just a few days - or have a custom design in about a week, with whatever connectors and filtered interfaces you desire. See all the Fast-Track, in stock I/O plates on our web site.

Want a different set of connectors or filtered interfaces? Contact JRE with your requirements and a custom I/O plate will be designed expressly for your test chamber. This plate will then be populated with the selected interfaces, mounted on the test chamber, final tested and then shipped to you. Other options such as fans, vents, internal AC power strips, fiber optic connectors can all be accommodated. JRE's extensive inventory allows us to ship your custom configured test chamber in as little as one week!

JRE Test, LLC 7940 Rae Blvd. Victor, NY 14564

www.jretest.com 585-298-9596 sales@jretest.com