



Wireless RF Test Enclosures

JRE 0709-U General Purpose USB RF Shielded Test Enclosure

Universal, preconfigured RF shielded test enclosure, ready to ship - immediately!

- Roomy 3.25 x 6 x 8.5 inches 90 x 150 x 215 mm inside
- Fits on any benchtop
- Stock configured for USB 2 devices
- Rugged welded aluminum construction
- Adjustable latch ensures tight RF shielding
- Excellent RF Isolation

Containing all the capability of the larger JRE enclosures, the compact JRE 0709-U is ideal for small wireless devices that use a standard USB 2 style connection. Two SMA Female bulkhead connectors provide connection for RF signals to the device inside the test enclosure.

Featuring rugged welded aluminum construction, you can be assured of its tight RF shielding effectiveness.

Long life door gasket material along with double edge engagement not only provides solid RF shielding, but smooth trouble-free operation over its lifespan.

The USB 2-1 filtered interface allows easy connection to the device within the test enclosure and internal electromagnetic absorbing material reduces RF reflections and hot-spots.

FEATURES & BENEFITS

- Double contact door shields ensures repeatable measurements
- 1/2" thick RF absorbing foam deadens standing waves and reflections for repeatable tests
- Heavy duty stainless steel hinge holds door steady
- Rugged welded aluminum construction for long life

CONNECTORS

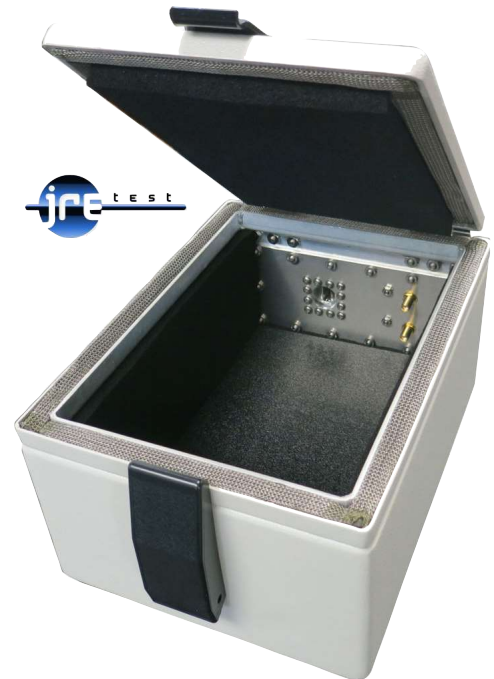
Two SMA Female bulkhead connectors
One JRE Test USB 2-1 Filtered USB 2.0 interface

ISOLATION

-100dB @ 1GHz, -95dB @ 3GHz, -85dB @ 6GHz

DIMENSIONS

Outside: 4.5" H x 7.25" W x 9.75" D 115 x 185 x 250 mm
Inside: 3.25" H x 6.0" W x 8.5" D 90 x 150 x 215 mm



JRE 0709-U
Included I/O Interfaces

Connectors: Two SMA female bulkhead

RF filtered data connectors: JRE Test USB 2-1
Filtered USB 2.0 interface

JRE Test, LLC 7940 Rae Blvd. Victor, NY 14564
www.jretest.com 585-298-9596 sales@jretest.com