



Wireless RF Test Enclosures

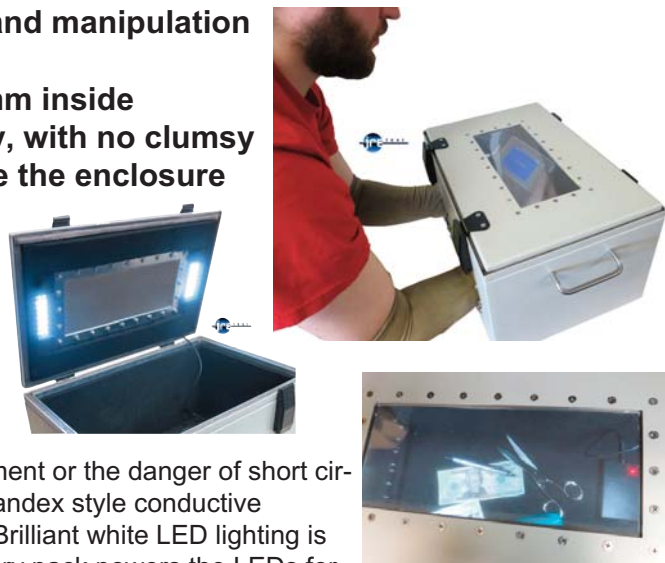
JRE 1812WS Test Enclosure with Window and Hand Entry

For testing or inspecting devices which require hand manipulation of controls, switches or keyboards

- Roomy 8 x 16.5 x 10.5 inches, 205 x 420 x 270 mm inside
- Patented sleeve design - Unimpeded hand entry, with no clumsy gloves - hands remain completely free inside the enclosure
- Patented high performance window
- Easily view device inside, LED lighting
- Dual latches ensure tight RF shielding
- Excellent RF Isolation at a low cost: \$1395

If you have need to access and handle your device within the shielded test environment, the JRE1812WS is ideal. Our Patented 'sleeve' design allows completely free hands inside

the enclosure, there are no clumsy gloves inhibiting tactile movement or the danger of short circuiting against your device. The arms are slipped through the Spandex style conductive sleeves, leaving the hands completely free inside the enclosure. Brilliant white LED lighting is provided, allowing clear vision inside the enclosure. A Li-Ion battery pack powers the LEDs for many hours and is easily charged using the provided charger. The use of a battery pack does not requiring any additional wiring, filtering or connections on the I/O plate interface.



The patented high performance viewing window utilizes a unique lamination of conductive PET plastic layers with novel grounding to provide RF shielding of over 70 db while still allowing a light transmission of greater than 70%.

Featuring rugged welded aluminum construction, you can be assured of its tight RF shielding effectiveness. Long life door gasket material along with double edge engagement not only provides solid RF shielding, but smooth trouble-free operation over its lifespan. Universal I/O plates allow almost any device to be interfaced inside the enclosure, and internal electromagnetic absorbing material reduces RF reflections and hot-spots. Unit shown with populated I/O plate for illustration.

FEATURES & BENEFITS

- Double contact door shields ensures repeatable measurements
- 3/4" thick RF absorbing foam deadens standing waves
- Heavy duty stainless steel friction hinges and struts
- Rugged welded aluminum construction for long life
- Wide variety of connector options for every use

CONNECTORS

Universal I/O plate (4.5" x 7" 115 x180mm) with incredible connector options. Easily changed in the field for multiple uses. JRE Test "B" size I/O plate

ISOLATION

-100dB @ 1GHz, -90dB @ 3GHz, -80dB @ 6GHz

DIMENSIONS

Outside: 8.5" H x 18" W x 12" D 250 x 460 x 305 mm
Inside: 8" H x 16.5" W x 10.5" D 205 x 420 x 270 mm

JRE 1812 I/O Interfaces

RF Feedthru: BNC, TNC, SMA, SMB, UHF, Type-N, reverse SMA

High Performance RF Filtered Interfaces: USB2-1, USB2-2, USB3-1, 3-2, LAN-1 Ethernet

Connector covers: Dust cover caps with tether chains included for all RF connectors

RF filtered data connectors: DB9, DB15, DB25, DB37, DB50, RJ11, RJ45, USB (Choice of 100 or 1000 pf filtering on data lines)

Power connection: 4 or 6 terminal barrier strip, 2500 pf filtering. 120/240 VAC power strip

Cover interlock switch: safety switch contact

JRE Test, LLC 7940 Rae Blvd. Victor, NY 14564
www.jretest.com 585-298-9596 sales@jretest.com