



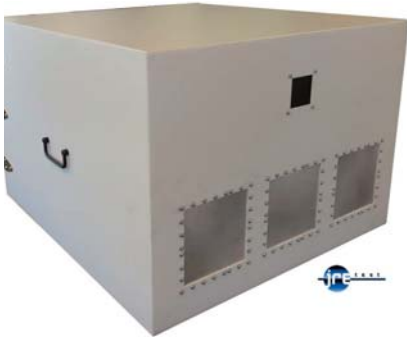
Wireless RF Test Enclosures

JRE 2830 RF Shielded Test Enclosure

Large benchtop enclosure with 3 I/O Plates allows plenty of interface

- 18.5 x 26.5 x 28.5 inches inside 470 x 670 x 725 mm
- Quad hinges keeps door sealed RF tight
- Rugged welded aluminum construction
- Wide selection of I/O options with our universal I/O plates, easily interchangeable too!
- Easy low cost UPS shipping - Worldwide! No pallets required – Saves \$1,000's
- Light weight, only 50 lbs! Compare to similar products that weigh over 100 lbs
- Excellent RF Isolation at a low cost: \$2895

Ideal for testing multiple devices in one enclosure or just large devices, The JRE2830 is perfectly suited for your tests. Triple I/O Plates allow tremendous interface capability, while our exclusive 'honey-comb' vent allows ventilation while still maintaining superb RF isolation.



Plenty of I/O capability with 3 plates

FEATURES & BENEFITS

- Double contact door shields ensures repeatable measurements
- 3/4" thick RF absorbing foam deadens standing waves
- Heavy duty triple stainless steel friction hinges and struts
- Rugged welded aluminum construction for long life
- Wide variety of connector options for every use
- 80mm vent option, AC or DC fan optional

CONNECTORS

Triple Universal I/O plates (7" x 7" 180 x 180mm) with incredible connector options. Easily changed in the field for multiple uses. JRE Test "C" size I/O plate

ISOLATION

-100dB @ 1GHz, -95dB @ 3GHz, -85dB @ 6GHz

DIMENSIONS

Outside: 20" H x 28" W x 30" D 510 x 710 x 760 mm
 Inside: 18.5" H x 26.5" W x 28.5" D 470 x 670 x 725 mm



Featuring rugged welded aluminum construction, you can be assured of its tight RF shielding effectiveness. Long life door gasket material along with double edge engagement not only provides solid RF shielding, but smooth trouble free operation over its lifespan. Extra wide opening for easy placement of internal devices.

Our wide selection of I/O connectors allow almost any device to be interfaced inside the enclosure, and internal electromagnetic absorbing material reduces RF reflections and hot-spots.

JRE 2830 I/O Interfaces

RF Feedthru:

BNC, TNC, SMA, SMB, UHF, Type-N, reverse SMA

High Performance RF Filtered Interfaces:

USB2-1, USB2-2, LAN-1 Ethernet

Connector covers: Dust cover caps with tether chains included for all RF connectors

RF filtered data connectors: DB9, DB15, DB25, DB37, DB50, RJ11, RJ45, USB (Choice of 100 or 1000 pf filtering on data lines)

Power connection: 4 or 6 terminal barrier strip, 2500 pf filtering. 120/240 VAC power strip

Cover interlock switch: safety switch contact

JRE Test, LLC 7940 Rae Blvd. Victor, NY 14564
www.jretest.com 888-430-3332 sales@jretest.com