



# Wireless RF Test Enclosures

## JRE LAN-USB 3 RJ-45 & USB 3 FILTERED INTERFACE \$789

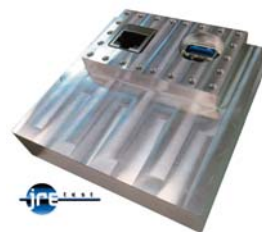
Easily test Ethernet and USB 3 connected devices in an RF Shielded test environment. Latest design includes new LTE cellular bands.

- Space and cost saving with two filters in one housing
- Both filters pass all data signals while rejecting Cellular, LTE, WiFi and signals above 700 MHz
- LAN section has all eight RJ-45 lines filtered, useful for Ethernet as well as other applications
- USB section is compliant with proper USB enumeration
- Balanced filtering for minimal ringing



The LAN-USB 3 filter consists of two separate and independent filtered interfaces inside of one rugged machined aluminum housing. The filter is designed to reject frequencies greater than the Cellular frequencies of 700 MHz while passing data between both RJ-45 connected devices and USB 2 devices.

The LAN section filters all 8 signal lines, allowing its use a general purpose filter so one may wire any signal on to any of the eight lines and pass it across the filter, knowing that anything below 480 MHz will pass and signals above 700 MHz will be attenuated by greater than 70dB. The use of high performance inductors allows currents of up to 250 mA and has a DC resistance on any path below 1.5 ohms.



JRE's USB 3 Patent Pending design uses an innovative application of signal phasing techniques and topology to filter out all RF signals except for the desired data signals. This ability to discriminate between data signals and undesired RF signals is especially valuable when testing at USB Super Speed data rates (since the signaling rate falls within Wireless signal frequencies), or when testing devices where the potential RF interfering frequencies fall within the pass band of a low pass filtered USB interface (such as wireless keyfobs or RFID devices). A-A Male jumper cable included.

### FEATURES & BENEFITS

- Patent Pending design discerns between data and RF signals
- Heavy duty machined aluminum case for reliable shielding
- Precision designed filtering for minimal ringing on data lines

### SPECIFICATIONS LAN SECTION:

Typical Insertion Loss (data lines):

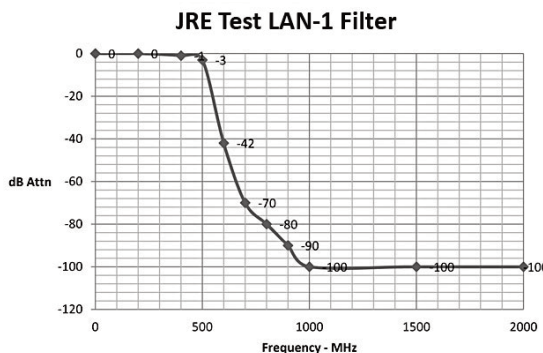
10 MHz	0.1 dB
250 MHz	1.5 dB
350 MHz	2.0 dB
480 MHz	3.0 dB
800 MHz – 6 GHz	> 80 dB

DC Power lines: 0.1 ohms DC, -3 db @ 10 MHz,  
> -60 @ 100 MHz, > -80 db 400 MHz to 6 GHz

USB 3 SECTION: 80 dB isolation in test system configuration

### DIMENSIONS

Outside: 3.2" H x 3.2" W x 0.8" D 80 x 80 x 20 mm



### JRE LAN-USB 3 Filtered Interface Adapter

- LAN section: RJ-45 Female jacks
- USB section: USB Type A connectors
- Filtering: All lines filtered
- Power capability: Up to 60 VDC at 250 mA, 1.5 ohms max DC resistance

**JRE Test, LLC 7940 Rae Blvd. Victor, NY 14564**  
**www.jretest.com 585-298-9596 sales@jretest.com**