



Wireless RF Test Enclosures

JRE LAN-USB 2 RJ-45 & USB 2 FILTERED INTERFACE \$689

Easily test Ethernet and USB 2 connected devices in an RF Shielded test environment. Latest design includes new LTE cellular bands.

- Space and cost saving with two filters in one housing
- Both filters pass all data signals while rejecting Cellular, LTE, WiFi and signals above 700 MHz
- LAN section has all eight RJ-45 lines filtered, useful for Ethernet as well as other applications
- USB section is compliant with proper USB enumeration
- Balanced filtering for minimal ringing

The LAN-USB 2 filter consists of two separate and independent filtered interfaces inside of one rugged machined aluminum housing. The filter is designed to reject frequencies greater than the Cellular frequencies of 700 MHz while passing data between both RJ-45 connected devices and USB 2 devices.

The LAN section filters all 8 signal lines, allowing its use a general purpose filter so one may wire any signal on to any of the eight lines and pass it across the filter, knowing that anything below 480 MHz will pass and signals above 700 MHz will be attenuated by greater than 70dB. The use of high performance inductors allows currents of up to 250 mA and has a DC resistance on any path below 1.5 ohms.

The USB filter section consists of a USB 2.0 compliant low pass filter with proper device enumeration to ensure any test 'hiccups' will be properly exchanged between devices, ie: no hang-ups are undetected, a problem when using fiber optic or other such interfaces. The interface consists of a balanced pair of bi-directional data lines and an unbalanced power and return pair. Standard USB Type A connectors are used allowing simple and reliable connection to your USB devices. Included is a USB Type A Male to Male jumper cable.

FEATURES & BENEFITS

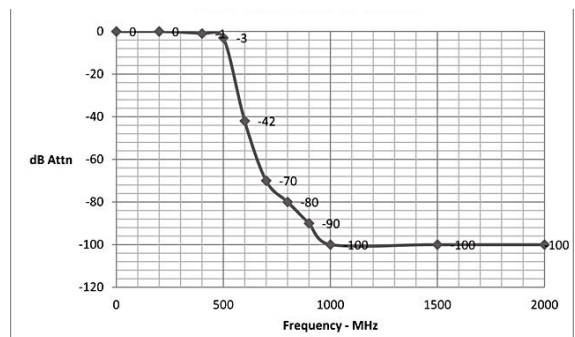
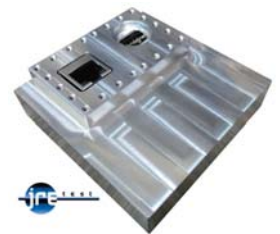
- Reduces interference from Cellular, LTE and WiFi
- Heavy duty machined aluminum case for reliable shielding
- Precision designed filtering for minimal ringing on data lines

SPECIFICATIONS:

Data Line Balanced Impedance: 100 Ohms typ.
 Typical Insertion Loss (data lines):
 10 MHz 0.1 dB
 250 MHz 1.5 dB
 350 MHz 2.0 dB
 480 MHz 3.0 dB
 800 MHz – 6 GHz > 80 dB
 DC Power lines: 0.1 ohms DC, -3 db @ 10 MHz,
 > -60 @ 100 MHz, > -80 db 400 MHz to 6 GHz

DIMENSIONS

Outside: 3.2" H x 3.2" W x 0.8" D 80 x 80 x 20 mm



JRE LAN-USB 2 Filtered Interface Adapter

- LAN section: RJ-45 Female jacks
- USB section: USB 2.0 Type A connectors
- Filtering: All lines filtered
- Power capability: Up to 60 VDC at 250 mA, 1.5 ohms max DC resistance

JRE Test, LLC 7940 Rae Blvd. Victor, NY 14564
www.jretest.com 585-298-9596 sales@jretest.com